



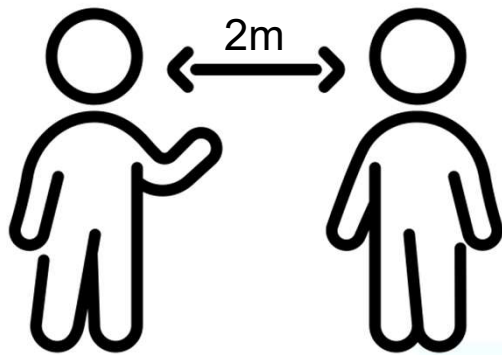
# **Empowering Newcomers: Fostering Connections and Knowledge in the Pharma Industry**

PSI conference 2024 – Non-technical TED Session

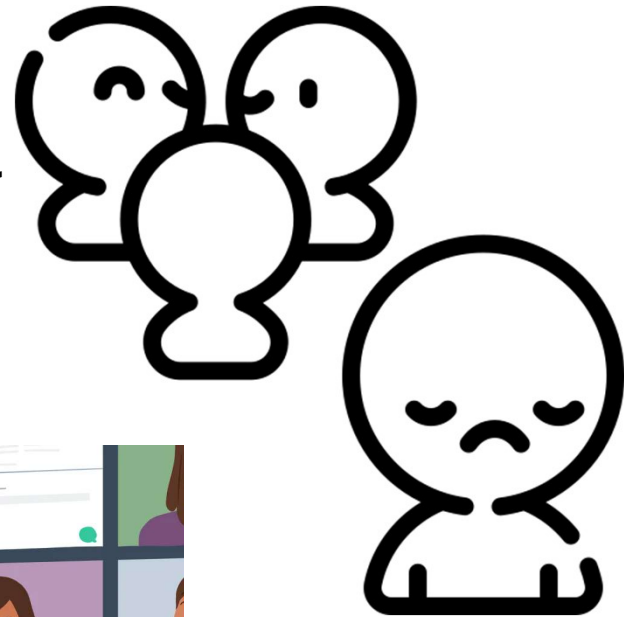
Kristina Weber

19th June 2024

# The Post-COVID Return to Office

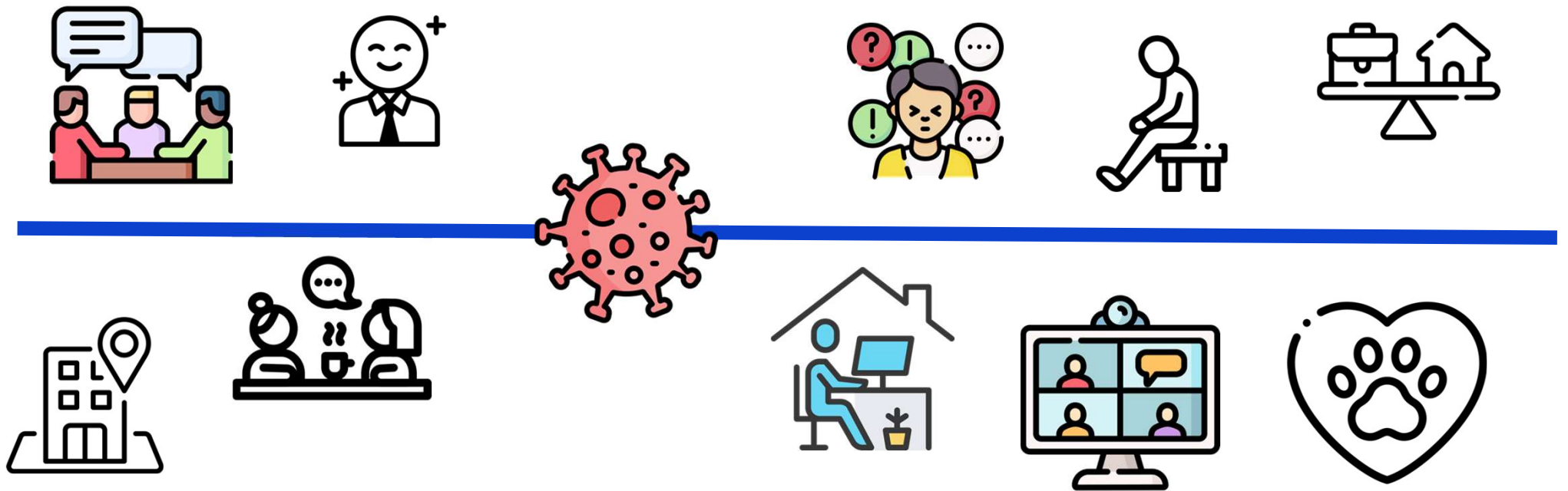


**"I haven't  
seen you in a  
long time!"**

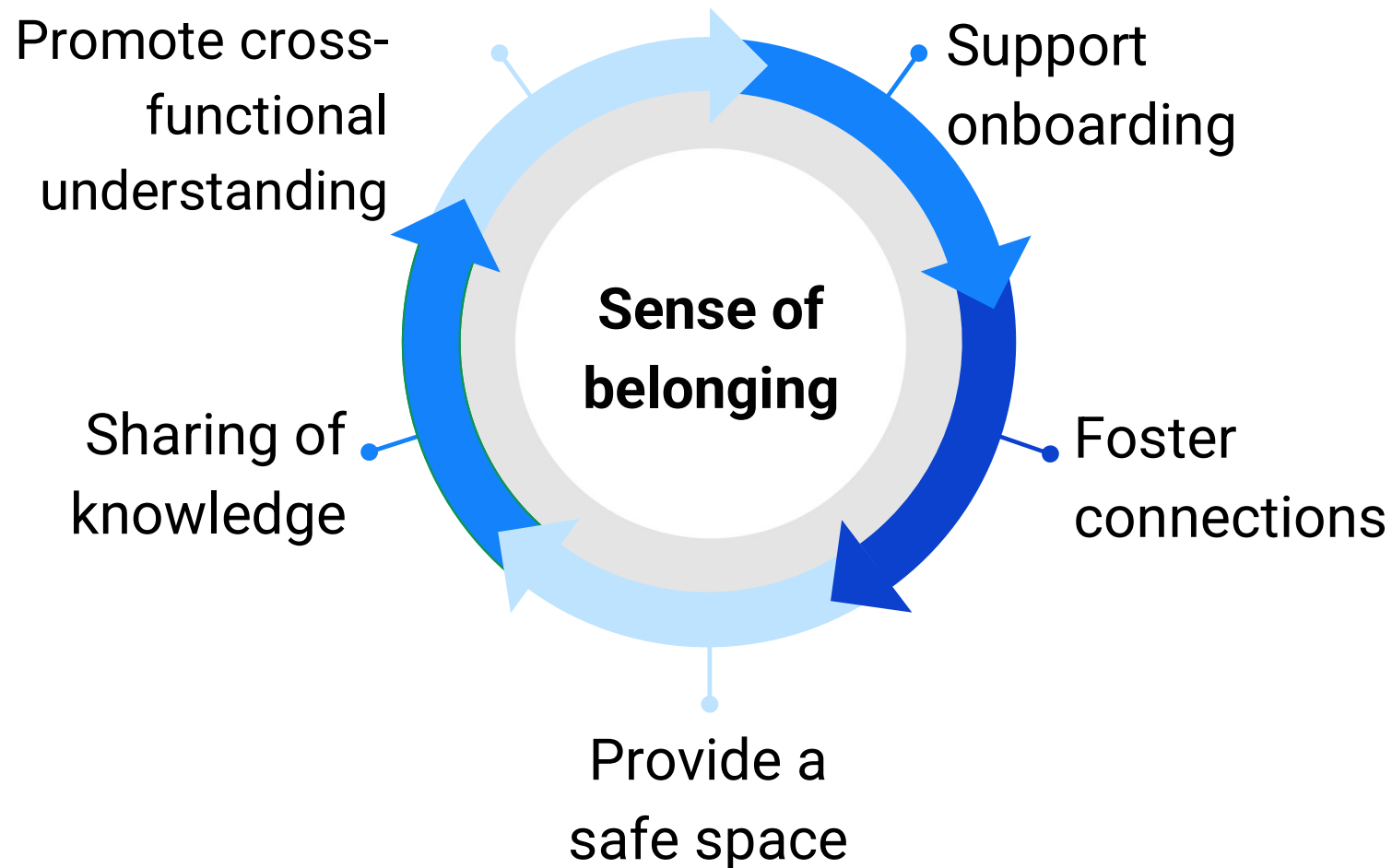


**Newcomer:  
"Nobody speaks to me.  
Tomorrow I'll stay  
home."**

# The Challenge of Onboarding During COVID



# Launching a Data Sciences Newcomer Community



# Community Engagement Through Monthly Gatherings

- Inclusive setting via **hybrid** format
- **Community-led** with facilitators instead of leaders
- Company-wide **knowledge**



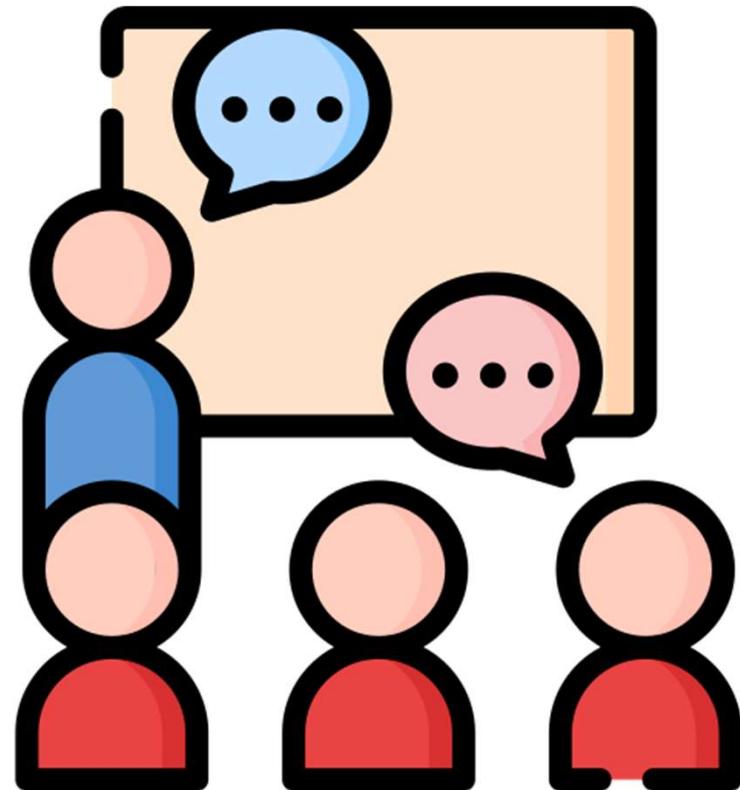
## Member-Driven Topics to ensure Relevance and Attendance

Topic	Vote via counting up if interested
Derivation of programming datasets	5
Collaboration between Statisticians and Programmers	5
Role of a statistician in real world data	5
Guidance on eCRF development	5
What is risk based monitoring and why does it matter for everybody?	6
Randomizaion: the role of the statistician in practise (both in randomized and non-randomized or open label studies)	8
When/How does the unblinding work? What to	



## Knowledge sharing with the help of guests

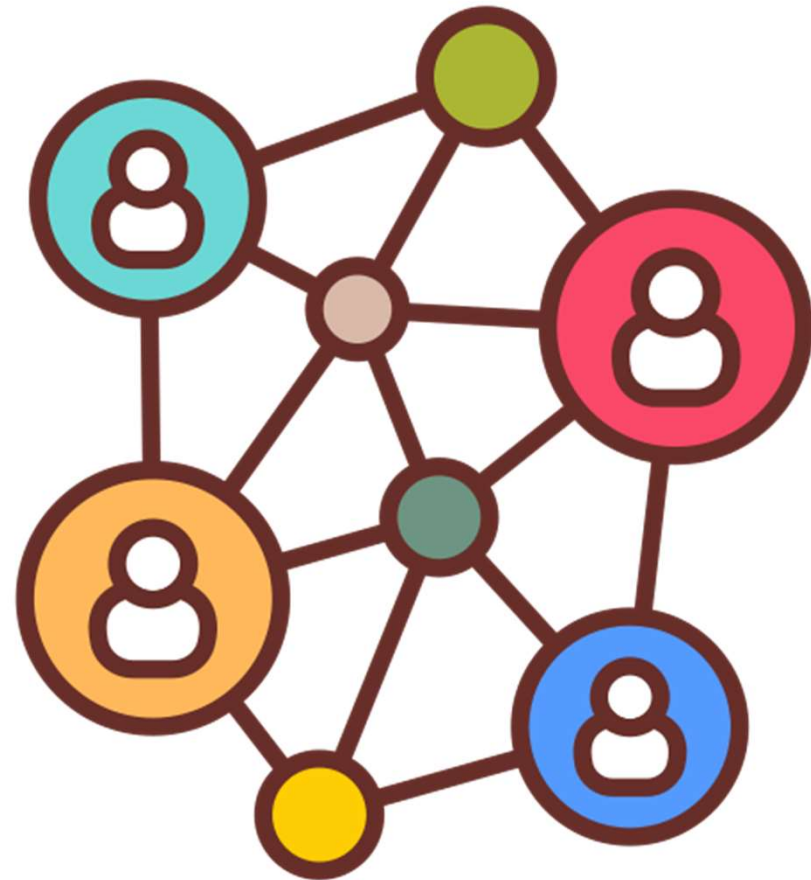
- Each topic is introduced by a local guest speaker
- **Extend Network**
- Limit of **5 slides**
- **Transition into discussion**





## What's next?

- **Safe space** under differing circumstances
- Keep **community-led spirit** by transitioning the facilitator role within the community
- Empower members to **build their own networks**





*“It’s so much more friendly with two”*

- A.A. Milne

Thanks a lot to Kathrin Flunkert for caring with me.

**Doing now what patients need next**